



Qness 150 CS
Qness 150 CSA+
Qness 150 R

A RELIABLE PARTNER

**UNMATCHED SIMPLICITY IN
ROCKWELL HARDNESS TESTING**

THE PERFECT INTRODUCTION TO
ROCKWELL HARDNESS TESTING

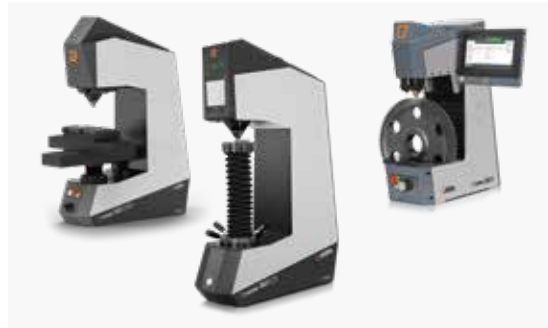
AT HOME EVERYWHERE: FOR INCOMING GOODS, WORKSHOPS, LABORATORIES AND SERIAL PRODUCTION

LED TEST SPACE LIGHTING Built-in LED workspace lighting simplifies the precise positioning of the test piece, thus enhancing operating convenience.



AFFORDABLE PRICING

SOPHISTICATED CONSTRUCTION, ULTRA-SIMPLE OPERATION



COMPACT DESIGN - LATEST TECHNOLOGY

- Test force range 1 kg to 250 kg in one series
- Machine versions to serve all applications and test piece size
- Direct depth measurement system, with a resolution of 0.05 μm
- Robust, welded steel frame and covers made of sheet steel



REMOVABLE DOWNHOLDER

No need for long retooling breaks due to inaccessible test points. The clamping head can be removed via 2 screws. Now, even test points in hard-to-reach contours can be accessed with ease.



QNESS 150 CS/CSA+ PEDESTAL

No suitable table in the testing area? No problem! The Qness 150 CS/CSA+ matches perfectly with the machine's optional pedestal. The superior-quality subframe is color-matched to the hardness testing device. The machine pedestal includes a spacious, lockable compartment in which to store accessories. Beechwood (40 mm thick) with a spindle bore.

SUPPORTED TEST METHODS



ROCKWELL

DIN EN ISO 6508, ASTM E-18

HRA	HRB	HRC	HRD	HRE	HRF
HRG	HRH	HRK	HRL	HRM	HRP
HRR	HRS	HRV	HR 15-N/T/W/X/Y		
HR 30-N/T/W/X/Y			HR 45-N/T/W/X/Y		



PLASTICS TESTING

DIN EN ISO 2039

49.03 N	132.9 N	357.9 N	961 N
---------	---------	---------	-------



BRINELL

HBT (not acc. to standards)



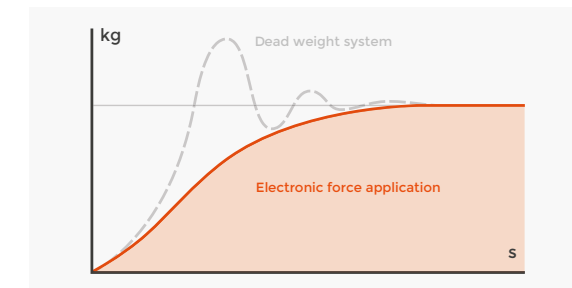
VICKERS

HVT (not acc. to standards)



CONVERSION

DIN EN ISO 18265, DIN EN ISO 50150, ASTM E140



FULLY AUTOMATED TEST CYCLE

Electronic force application and closed-loop control

ROCKWELL HARDNESS TESTER

VERSION 150 CS

READY-TO-USE COMPLETE PACKAGE

- | DAKS & ASTM-conformant Rockwell indenter included
- | Hardened test anvil

ADVANTAGES

- | Rapid delivery
- | Factory-calibrated

INDIVIDUAL OPTIONS

- | Test blocks
- | Additional indenters
- | Machine pedestal
- | Clamping devices from the comprehensive QATM accessories program
- | Customer-specific clamping mechanisms



SOPHISTICATED OPERATION

INTUITIVE FEATURES AND OPERATION



START BUTTON

Start button at the front of the tester ensures a simple and rapid start to hardness testing (particularly when wearing gloves), and there's also touchscreen control.



TEST TABLE HEIGHT ADJUSTMENT

Via stable, ultra-precise roller-bearing spindle guide. Solid, no-maintenance structure. All devices are available with a \varnothing 25 mm table mount (optional $\frac{3}{4}$ " adapter available) facilitating the use of a wide range of test tables and devices.



DIGITAL DATA EXPORT

Test results and all related information can be transferred to other data storage mediums via the USB port at the side.



OPERATION DISPLAY AND QPIX TE SOFTWARE

QATM has developed a 7" color display with a robust sheet steel frame for the Qness 150 CS. The display uses capacitive-touch technology and has been optimized to guarantee operational precision and rapid reaction times.

The new Qpix TE software guarantees simple operation with larger buttons and a more modern and intuitive software interface.

Features:

- | Extra-large, clearly-visible presentation of test results
- | High-/low-quality evaluation of results featured in green and red according to the tolerance levels set
- | Test results list for 999 values
- | Statistics overview (min/max/range/cp/cpk/average)
- | Conversions
- | Surface corrections
- | Simple test method changeover
- | Wide range of operating languages
- | Password protected area for expanded range of settings

ROCKWELL HARDNESS TESTER

VERSION 150 R

Rockwell hardness tester with add-on modules for full automation

- | Automatic test sequence with optional automatic start
- | Test clamped or unclamped
- | Creation of favorites, statistics, progression displays, ISO and ASTM conversions
- | Direct data export via RS232, Ethernet or USB
- | Various result export possibilities as configurable protocol or data export in Qpix T2R software



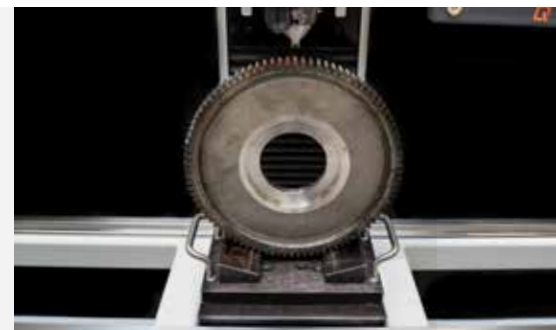
A LONG TERM INVESTMENT

A HARDNESS TESTER THAT WILL GROW ACCORDING TO YOUR REQUIREMENTS



BARCODE READER

Qpix software platforms support the use of barcode and QR code readers, simplifying workflows for inspectors and preventing operator error.



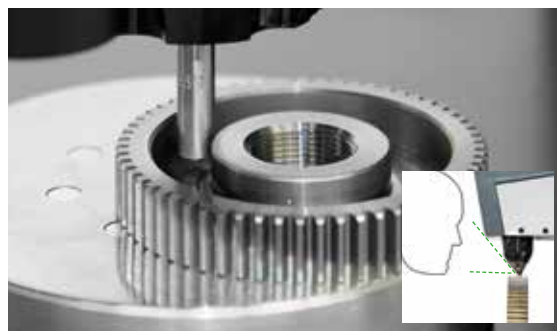
CUSTOMIZED DEVICES

The Qness 150 R can be combined with all types of devices. With its high load capacity, it is ideally suited for large components. Customized solutions will be realized by our Special Projects department in order to meet your individual requirements.



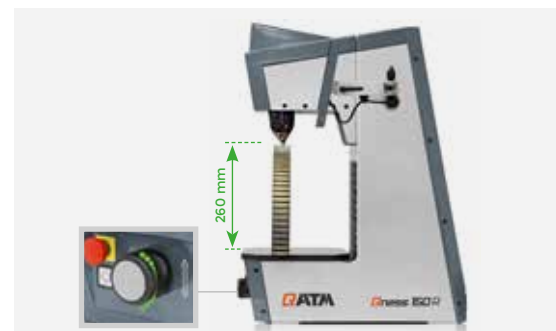
HIGH PERFORMANCE AND HIGHLY PROFESSIONAL

Completely connected in high performance with the integrated Windows PC with SSD hard disk even in the base model Qness 150 R in standard equipment. Customized data connection and integration into production lines possible up to request.



ACCESSIBILITY TO NARROW TEST PLACES

- | Maximal visibility
- | LD lenses provide an increased working distance
- | Collision proof
- | Overview and analysis via optical system
- | Field of view 0.2 - 40 mm



EXTENDED TEST AREA

The complete Qness 150 series can be customized. Send us your specifications and you will immediately receive a customized concept.

TEST SPACE LIGHTING

TEST POINT POSITIONS PERFECTLY IN FOCUS

The functionally integrated test space lighting permits accurate positioning of the indenter. (Standard on Qness 150 R)





Qpix T2 R

MOST SIMPLE OPERATION

ON 10.1" TOUCH-SCREEN

- | Across-the-line software design
- | Numerous statistic functions: bar graph, progression, histogram
- | Measurement value list to export as „Excel“ (CSV via export configurator)
- | Standardized detail information to each indentation
- | A4 protocol as PDF / direct print
- | User management with different security access levels

Configurable protocol and data management



Test result harder than allowed limit hardness



Result list test point identification



Integrated statistic view

ROCKWELL HARDNESS TESTER

VERSION 150 CSA+

Combines versatility of an automatic hardness tester with the speed of our Rockwell testers.

- | Proven concept redefined
- | Automatic 3-axis control
- | Ideal for multiple samples
- | Short cycle times



**FULFILS CLEAR
REQUIREMENTS**

SIMPLE AND RELIABLE



FULLY AUTOMATED 3-AXIS CONTROL

Fully automatic and robust XY slide with high-precision positioning drive. Dynamic joystick to control all 3 axes (XYZ). Usable support surface 200 x 180 mm.



TEST TABLE HEIGHT ADJUSTMENT

The height of the test table is infinitely adjustable (position can be fixed) via the play-free roller-bearing spindle guide - ideal for fully automatic series and progression tests on parts with identical test height. The test sequence is performed without clamping. Individual tests can also be carried out with the patented, swivelling downholder clamp.



SAMPLE IMAGE CAMERA

Ultimate ease of use with 5 megapixel colour camera for recording the entire sample for a perfect overview and documentation in the protocol. It is standard in the CSA+ versions to record the entire table surface as sample image.



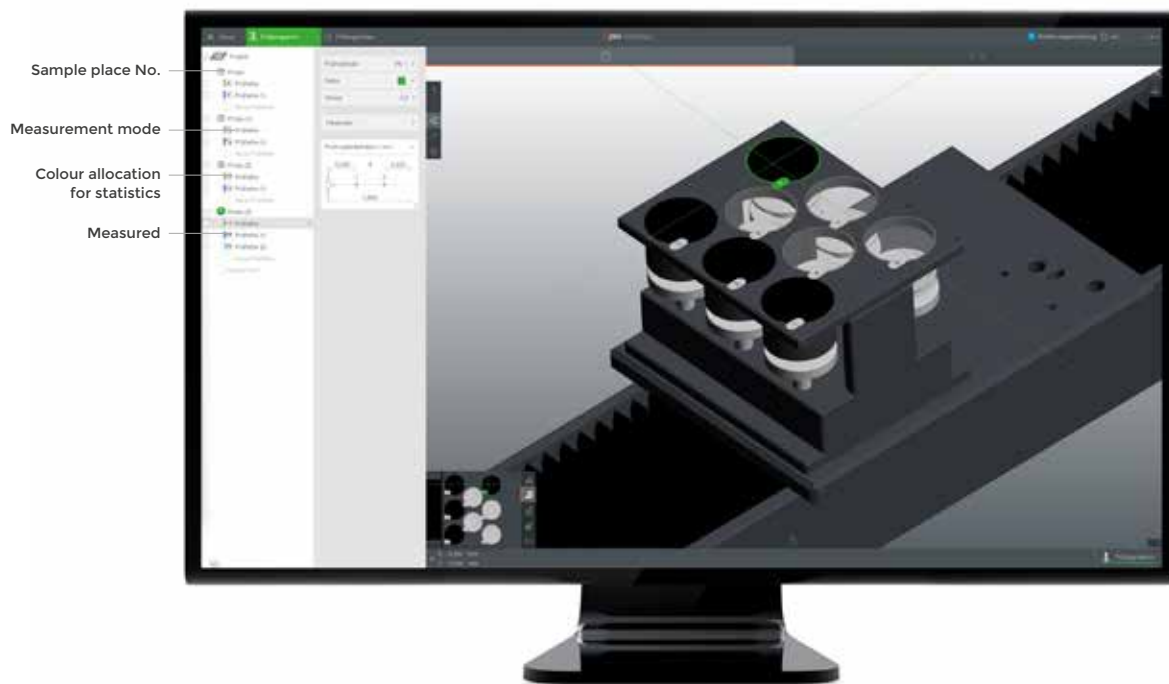
AUTOMATIC PROGRESSIONS

The automatic XY slide with high-precision positioning drive enables extensive test series and hardness curves. External joystick for controlling the axis. Usable support surface: 180 x 200 mm, Traverse path: X 220 / Y 220 mm.



IDENTICAL SAMPLE TESTS

An entire range of relevant data, such as test patterns, test methods and user fields can be activated via pre-defined sample magazines. QATM can provide the most suitable clamping setup, matrices and cassette systems for every requirement.



Qpix CONTROL 2

OPERATION VIA EXTERNAL PC SYSTEM

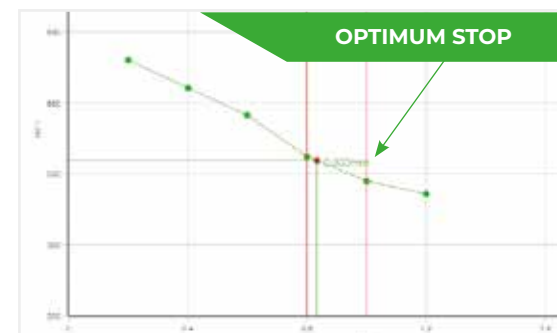
REVOLUTIONARY 3D OPERATING CONCEPT

Intuitive, clearly organized and professional: Qpix Control2 next-generation hardness testing software, developed based on customer feedback and input for maximum user-friendliness. 3D imaging and a whole range of easily understood control elements and views included in the software. It sets new standards in hardness testing.



CUSTOMER-SPECIFIC SAMPLE HOLDER

Identical samples can be set up in the software in scale as a 3D model.



SAVE TIME WITH OPTIMUM STOP

Time-saving test mode 'Complete all indentations - then evaluate' and 'Optimum stop' to complete test series as soon as the lower hardness limit has been undercut.

INDUSTRY 4.0

PREPARED FOR THE PRESENT AND THE FUTURE



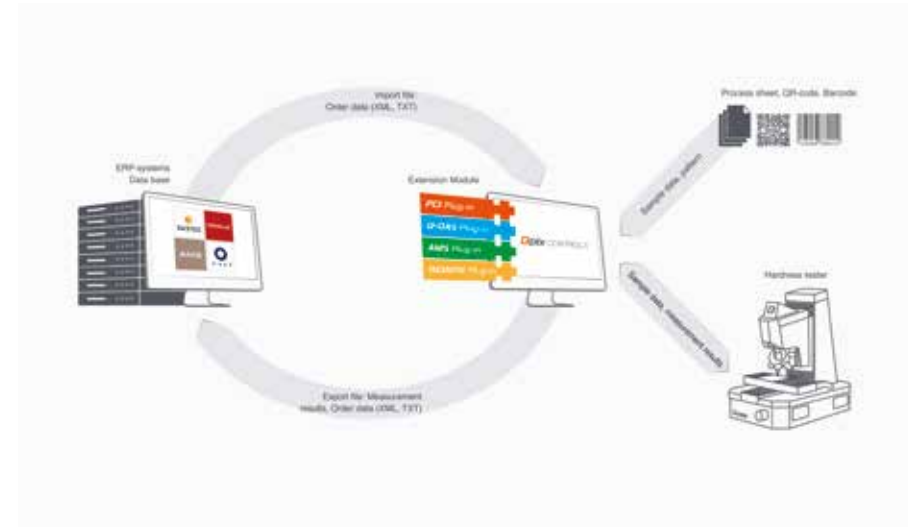
PROFESSIONAL DATA MANAGEMENT

Clearly structured batch management and effective use of templates from a wide range of test projects. Structured measurements with comprehensive background order information. Templates can be generated to contain all necessary information about test patterns, test methods, names and userfield information.



QATM CALIBRATION MANAGER: ADVANCED TEST BLOCK MANAGEMENT

Redefining calibration result management: The QATM Calibration Manager can be set up to provide users with reminders of necessary checks at selected intervals. Test results can be added to the ongoing statistical profile at the push of a button. A clearly comprehensible overview of permitted tolerance values and long-term tracing of trends derived from all results, for every device and every test block. QATM test block data can be called up conveniently online without the need to enter test plate details. Extreme-ly simple protocol access for purposes such as audits.



COMPLETE INTERLINKABILITY

Optionally completely interlinkable with databases, CRM systems and statistics programs via the PCI software module and with a direct link-up to production control systems - also for completely unmanned operation via the Qpix Remote Plug-In interface. The expert QATM team looks forward to helping you conceive the best possible solution for every link-up option.

MAXIMUM QATM-STANDARD
PRECISION

NORM- COMPLIANT WITH A DIRECT DEPTH-GAUGING SYSTEM

QATM configures the Rockwell hardness testers with a direct, ultra-precise HEIDENHAIN depth-gauging system, positioned exactly on the axis of the indenter. This prevents measurement inaccuracies caused by deformation in the system.

Another unbeatable benefit: Indenting depth can be gauged directly and can be easily calibrated in accordance with the latest Rockwell norms.



**Qness 150 CS****Qness 150 R****Qness 150 CSA+**

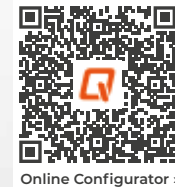
Test force range	1 - 250 kg (9.81 - 2450 N)	1 - 250 kg (9.81 - 2450 N)	1 - 250 kg (9.81 - 2450 N)
Height adjustment	manual / spindle	dynamic, rotating wheel	dynamic, automated 3-axis joystick (CAS technology)
Test height	250 mm	260 mm	140 mm
Throat depth	157 mm	180 mm	238 mm
Test table	Ø 100 mm	250 x 260 mm	180 x 200 mm
Traverse path	-	-	X 220 / Y 220 mm
Sample image camera	-	-	5 MP
Max. workpiece weight	100 kg	100 kg	100 kg
Weight of basic device	77 kg	105 kg 125 kg (with test height extension)	140 kg
Software	Qpix T²	Qpix T² R	Qpix CONTROL²
Display	7" capacitive touch (color)	10.1" capacitive touch (color) Windows 10 IoT / 128 GB SSD	External PC system Windows 11
Test sequence	fully automated / electronic force application	fully automated / electronic force application	fully automated / electronic force application
Ports	1x USB (Front)	1x USB (Front), 2x USB, 1x RJ45 (Ethernet), 1x VGA, 1x RS232	1x RJ45 (Ethernet)



Pedestal (Option)

**ONLINE
PRODUCT-CONFIGURATOR**

For more equipment and accessories go to the online product configurator at www.qatm.com



Online Configurator >



ATM Qness GmbH

Emil-Reinert-Str. 2
57636 Mammelzen
Germany

Phone: +49 2681 9539 0
Fax: +49 2681 9539 27

ATM Qness GmbH

Reitbauernweg 26
5440 Golling
Austria

Phone: +43 6244 34393
Fax: +43 6244 34393 30



info@qatm.com www.qatm.com



VERDER scientific

VERDER SCIENTIFIC

**ENABLING
PROGRESS.**

Under the roof of VERDER SCIENTIFIC we support thousands of customers worldwide in realizing the ambition we share.

As their technology partner behind the scenes, we deliver the solutions they need to make progress and to improve the everyday lives of countless people. Together, we make the world a healthier, safer and more sustainable place.

